

# **MP-1000**

## **User's Manual**

**(Preliminary)**

### **Network Media Player**



[http:// www.datavideo-tek.com](http://www.datavideo-tek.com)

# Table of Contents

<b>Warnings and Precautions .....</b>	<b>2</b>
<b>Introduction .....</b>	<b>3</b>
<b>What's in the Package .....</b>	<b>3</b>
<b>Front Panel &amp; Rear Panel .....</b>	<b>4</b>
<b>Playlist and Operation .....</b>	<b>5</b>
<b>MP-1000 Device Setup .....</b>	<b>6</b>
-. MP-1000 Installation	
-. MP-1000 Setup Menu	
-. MP-1000 Network Setup Screen	
-. MP-1000 Remote Controller	
-. Scrolling Text Format	
<b>MP-1000 ADMINISTRATION TOOL Software .....</b>	<b>12</b>
<b>HTTP Server Setup .....</b>	<b>25</b>
<b>Service and Support .....</b>	<b>34</b>

## Warnings and Precautions

1. Read all of these warnings and save them for later reference.
2. Follow all warnings and instructions marked on this unit.
3. Unplug this unit from the wall outlet before cleaning. Do not use liquid or aerosol cleaners. Use a damp cloth for cleaning.
4. Do not use this unit in or near water.
5. Do not place this unit on an unstable cart, stand, or table. The unit may fall, causing serious damage.
6. Slots and openings on the cabinet top, back, and bottom are provided for ventilation. To ensure safe and reliable operation of this unit, and to protect it from overheating, do not block or cover these openings. Do not place this unit on a bed, sofa, rug, or similar surface, as the ventilation openings on the bottom of the cabinet will be blocked. This unit should never be placed near or over a heat register or radiator. This unit should not be placed in a built-in installation unless proper ventilation is provided.
7. This product should only be operated from the type of power source indicated on the marking label of the AC adapter. If you are not sure of the type of power available, consult your Datavideo dealer or your local power company.
8. Do not allow anything to rest on the power cord. Do not locate this unit where the power cord will be walked on, rolled over, or otherwise stressed.
9. If an extension cord must be used with this unit, make sure that the total of the ampere ratings on the products plugged into the extension cord do not exceed the extension cord's rating.
10. Make sure that the total amperes of all the units that are plugged into a single wall outlet do not exceed 15 amperes.
11. Never push objects of any kind into this unit through the cabinet ventilation slots, as they may touch dangerous voltage points or short out parts that could result in risk of fire or electric shock. Never spill liquid of any kind onto or into this unit.
12. Except as specifically explained elsewhere in this manual, do not attempt to service this product yourself. Opening or removing covers that are marked "Do Not Remove" may expose you to dangerous voltage points or other risks, and will void your warranty. Refer all service issues to qualified service personnel.
13. Unplug this product from the wall outlet and refer to qualified service personnel under the following conditions:
  - a. When the power cord is damaged or frayed;
  - b. When liquid has spilled into the unit;
  - c. When the product has been exposed to rain or water;
  - d. When the product does not operate normally under normal operating conditions. Adjust only those controls that are covered by the operating instructions in this manual; improper adjustment of other controls may result in damage to the unit and may often require extensive work by a qualified technician to restore the unit to normal operation;
  - e. When the product has been dropped or the cabinet has been damaged;
  - f. When the product exhibits a distinct change in performance, indicating a need for service.

## 1. Introduction

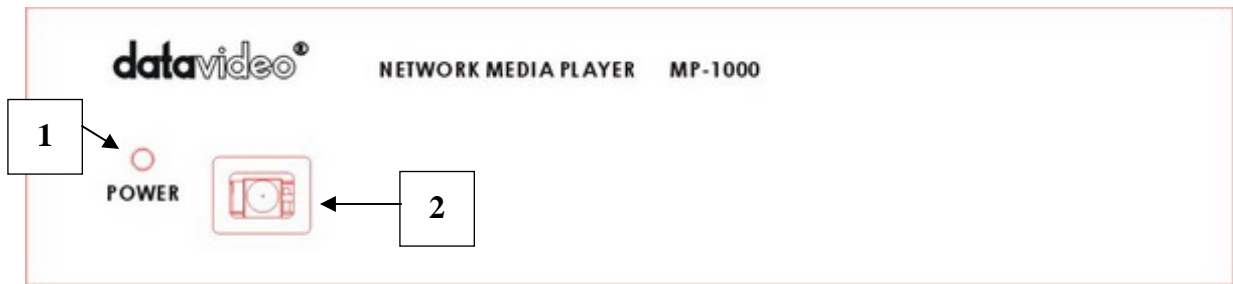
MP-1000, a Media Player with built in CF card storage, video outputs and networking capability. Connecting MP-1000 to a local Ethernet network or Internet, digital media files (JPEG, MP3, MPEG 1/2/4) can then be stored onto the CF Card from a host content server, a playlist editor allows user to create a playlist remotely and pre-schedule the play sequence of the media content on CF card. Support fixed IP, DHCP IP, Password security, RSS feeds and Scrolling text banner... multiple MP-1000 can be installed in the field such as in a shopping mall, Department stores, MRT stations, schools and classroom... for Scheduling Media playback as well as a real-time news broadcast.

### What's in the box?

Items	Description	Q'ty
1	BNC to BNC cable 1.2M	3
2	S-Video cable 1.2M	1
3	2RCA to 2RCA 5ft	1
4	Ether cable 8P to 8P 1M	1
5	2G CF CARD	1
6	MP-1000 Remote controller	1
7	MP-1000 Software CD	1
8	Switching Adaptor DC 12V / 0.5A	1
9	User's Manual	1

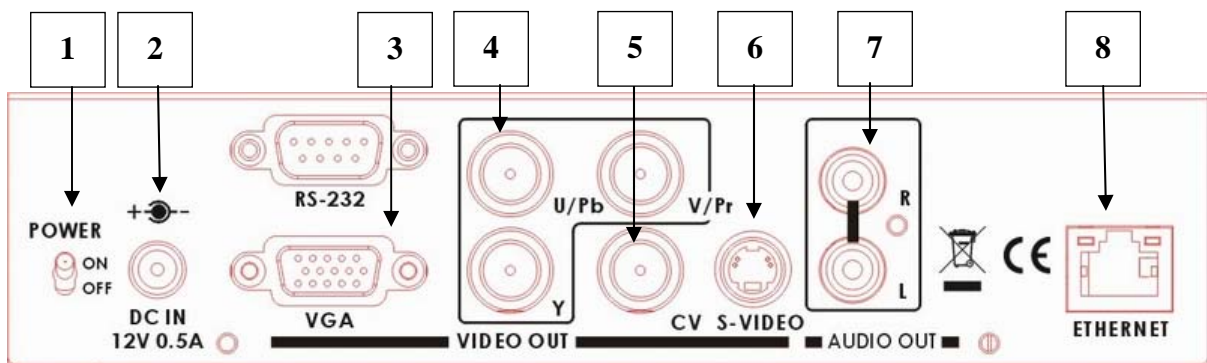
## 2. Front Panel and Rear Panel

### 2.1 Front Panel:



1. **LED indicator:** LED light in Green color for POWER ON and Stand by status, and no light in disconnecting DC in.
2. **IR receiver:** To receive the IR signal from MP-1000 remote controller

### 2.2 Rear Panel:



1. **Power Switch:** Power ON/ OFF
2. **DC plug in:** DC 12V, 0.5A input
3. **VGA Output:** D-sub 15pin VGA connector output to PC Monitor
4. **YUV Output:** 3 x BNC connectors for component YUV video signal output
5. **CVBS Output:** 1 x BNC connector composite signal.
6. **S-Video Output:** 1x 4-Pin DIN Plug connector for S-Video (Y/C) signal output
7. **Audio output:** 2x RCA connectors for Stereo unbalance audio outputs
8. **RJ-45 (Ethernet port):** 100/10M base Ethernet Network interface

***P.S. RS-232 Function still not work***

### 3. Playlist and Operation

#### 1. Playlist:

- **Playlist** is a script text file including command, time schedule, download filename and content server IP address for MP-1000 player to execute line by line.
- **Playlist** is created by the **MP-1000 Client Administration Tool** administrator software from the Host PC

#### 2. Basic Operation:

- Use Administrator tool to upload **playlist** file into the specific URL path of HTTP or FTP server
- Connect audio/video output to a TV display and Ethernet RJ-45 to a Network
- Turn on MP-1000, it will initialize Network LAN devices, download **playlist** from the specific URL and store it onto CF card automatically
- MP-1000 will interpret the **playlist** file and execute tasks including download files, playback files, time schedule ...etc. or to playback a media files repeatedly until stop or reboot command
- Administrator can update new **playlist** by using the same filename on URL, MP-1000 will load this new playlist file when it is powered-up manually, or by a pre-scheduled daily reboot time, or by a preset interval time that allow player to visit the URL.

#### 3. Server Monitoring and MP-1000- Client Administration Tool

- **Server Monitoring** is a Windows application software to manage multiple MP-1000 devices thru Local Network or Internet connection
- **MP-1000- Client Administration Tool** has many useful commands and editor tools to monitor and control client devices

## 4. MP-1000 Device Setup

### 1. MP-1000 Installation

- High speed CF (Compact Flash) memory card is required (e.g. Scandisk Ultra II)
- Format CF card to **FAT32** by a PC for better performance
- Plug in CF card into MP-1000 CF card slot
- Connect MP-1000 thru Ethernet LAN cable to your Local Network or to Internet
- Connect video cable (RCA or S-Video) to your TV Monitor or connect the VGA output to a PC monitor
- Connect audio cable to Monitor's audio input
- Power on MP-1000 (Monitor screen will display 'Initializing')

### 2. MP-1000 Setup Menu

- TV screen will show "Initializing", "Initializing LAN", "Connecting DHCP Server..", "IP Address", "CF Card" then stop at main menu
  - \*. Note: It will take some time on the "Connecting to DHCP Server" section, which is depending on the speed of network router to assign an IP for MP-1000*
- Main menu will show the following items on left side
  - Client Local IP: xxx.xxx.xxx.xxx
  - Server IP: xxx.xxx.xxx.xxx or Host name
  - Time: YYYY/MM/DD HH:MM
  - MAC Address: xx-xx-xx-xx-xx-xx
  - Server Connection: ON or OFF or Error
  - Storage: xxxx MB
- Main Menu will show the following items on the right side
  - Setup : press ENTER key to go into MP-1000 Setup screen
  - Storage : Press ENTER key to go to file folder of CF card

### 3. MP-1000 Network Setup Screen

- Use the remote controller to navigate and make changes
- Press ENTER from main menu to Setup screen
- Setup has 'Network', 'Time', 'Device Schedule', 'Auto Start', 'Factory Default', 'Save and Reboot' and 'Return to menu' selections.
- Press ENTER on an item to go to its page

## 'Network' Setup Screen

- a. **User Name and Password:** Use "Select" or "Go to" key to open virtual keyboard. Move cursor to any letter and press ENTER, or use '0' (zero) to erase letter. After finished, press "Select" or "Go to" key again to exit virtual keyboard mode. Press ENTER key on 'user name' or 'password' to go to next page
- b. **Server IP and Host Name:** Move cursor to select 'Server static IP' or 'Host Name'. Use numeric key pad of remote to type 3 digits for static IP or use virtual keyboard to type 'Host Name'. Press ENTER to next page. (Server IP is the PC's IP where your MP-1000 ADMINISTRATION TOOL program is running. Host Name is go out to Internet server)
- c. **Server Port (new feature):** default is 5021. If not please use remote control to enter '5021'. This port number must match with MP-1000 Administration Tool's. Please go to MP-1000 Administration Tool's Server Setup Utility to modify server's port number if 5021 is already occupied. After port changed, close MP-1000 Administration Tool and open again to make new port effective.
- d. **Client DHCP or Static IP:** Move cursor to select 'DHCP' or 'Static IP' and press ENTER on 'Static IP' to Static IP page or DHCP to Setup screen. (DHCP is recommended.)

## 'Time' Setup Screen

- a. **Time Server:** Use cursor left or right to select 'time.nist.gov' or 'windows.time.com'. Use cursor down to next item
- b. **Date:** you can ignore this because client board will get internet time during power up initialization unless you don't have internet connection
- c. **Time:** Same as Date
- d. **Time Zone:** Use cursor left or right to select your local time zone
- e. **DST(Day Saving Time):** Use cursor to select On or OFF. If On, it will add one hour
- f. **Reboot Time:** Move cursor to select 'OFF' or type 2 digits for daily reboot time. When time is up, client will reboot itself.
- g. Press ENTER on any field to go back to Setup screen

## **'Device Schedule' Setup Screen**

- a. Reboot Time: Move cursor to select 'OFF' or type 2 digits for daily reboot time. When time is up, client will reboot itself. If auto start is set to network mode, it will download new playlist file. Also player will send playback log data back to server for further usage.
- b. Device Schedule: Move cursor to 'OFF' or 'ON'. If 'ON', another line below will display 'HH MM to HH MM'. Device ON time will turn on video and start to play from existing playlist file in the CF card. Device OFF time will turn off video and stop playing.

## **Auto Start Screen**

- a. OFF: After power up, client will do nothing and wait for server's command
- b. Local CF: After power up, client will playback according to playlist file stored in the CF card or playback A-Z order files if no playlist file is found.
- c. HTTP URL: Use CAT's client setup utility to enter network URL path. After power up, client will go to this URL path to download playlist file and execute action item listed in the playlist file.
- d. iCAT: This is a web based management software like CAT, but iCAT allows user to use browser to access from any PC, anywhere. iCAT is not like CAT has more interactive commands. iCAT is more schedule-oriented automatic method.

Get 10 digit ID from iCAT program's "Add player". When player powers up, it will login to iCAT server, user will see its on-line. For more detailed, please refer to iCAT user guide document.

## **Language:**

If revision # on the main menu has 'U' which means European fonts are installed.

Selections are 'English', 'East-South European', 'Western European', and 'Turkish'. This font is used for RSS and instant message display on the scroll bar.

**Factory Default:** load pre-defined values into Setup settings. For example;

- a. Device Name: NDSP01
- b. Password: 123
- c. Server IP: 192.168.1.106
- d. Server Port: 5021
- e. Device IP: DHCP

**Save and Reboot:** save all the changes and reboot client

**Return to menu:** just return to main menu

[Note-1]: All these client setup settings can be modified in the "Client Setup Utility" of MP-1000 ADMINISTRATION TOOL software. You can save as "autoconfig.mia" filename into CF card then plug into CF slot and power up client board. It will show "Auto Updating" message and save into EEPROM. Remove CF card and delete this file to avoid reload again.

[Note-2]: You can save as "autoconfig.mib" file name, it will do the same thing to update EEPROM except this autocinfig.mib file will be deleted after update.

#### 4. MP-1000 Remote Controller



Label	Remote Key Function
<b>Main Menu</b>	Switch to main menu screen from SmartNavi screen
<b>Video Mode</b>	Switch between S-Video/Composite Video and VGA output
<b>Keyboard</b>	Only available in Setup screen to <b>enter or exit</b> virtual keyboard page (use key '0" as erase key)
<b>MUTE</b>	Mute/Un-mute sound
<b>VOL +</b>	Sound level control
<b>VOL -</b>	Sound level control
<b>Position +</b>	Adjust down scrolling text bar position
<b>Position -</b>	Adjust up scrolling text bar position
<b>Background Color</b>	Background color for scrolling text bar (8 colors)
<b>Foreground Color</b>	Foreground color for scrolling text bar (white and black)
<b>Transparent</b>	Scrolling text transparent level (0%, 25%, 50%, 75%, 100%)
<b>Speed</b>	Scrolling text speed settings (fast, normal and slow)
<b>Scroll Bar Clock</b>	Turn On/off Clock display on the scrolling text bar
<b>EZ-Play</b>	Do auto download/playback files in A-Z order from CF card or execute "playlist.mpl" file in the CF card

## 5. Scrolling Text Format

A regular .txt file can be used to store any text data including English, Chinese or Japanese. This text file data will be scrolled like stock symbol or news ticker along with any photo or video file.

At the 1<sup>st</sup> line of the text file, user can program some settings for the text color, and position.

osd\_settings=[B/G color], [F/G color], [Transparent], [Speed], [Font Size],  
[Clock]

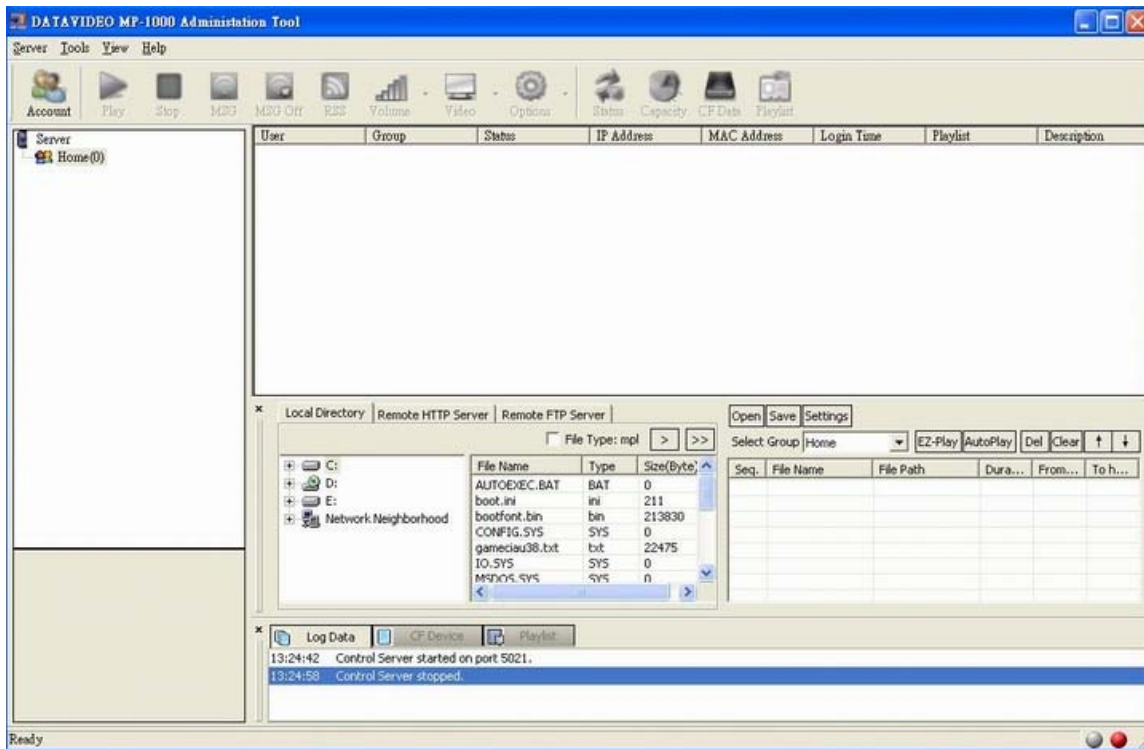
e.g. "osd\_settings=2,1,0,0,0,0

1. **B/G color:** a digital number from 0 to 7 (0blue, 1grey, 2red, 3ligh blue, 4green, 5yellow, 6magenta, 7orange)
2. **F/G color:** 0(white). 1(black)
3. **Transparent:** 0(no transparent effect), 1(75%), 2(50%), 3(25%), 4(100%)
4. **Speed:** 1(slow), 2(normal), 4(fast)
5. **Font size:** 1(small), 2(medium), 3(large)
6. **Clock/Date:** 1(On), 0(Off)

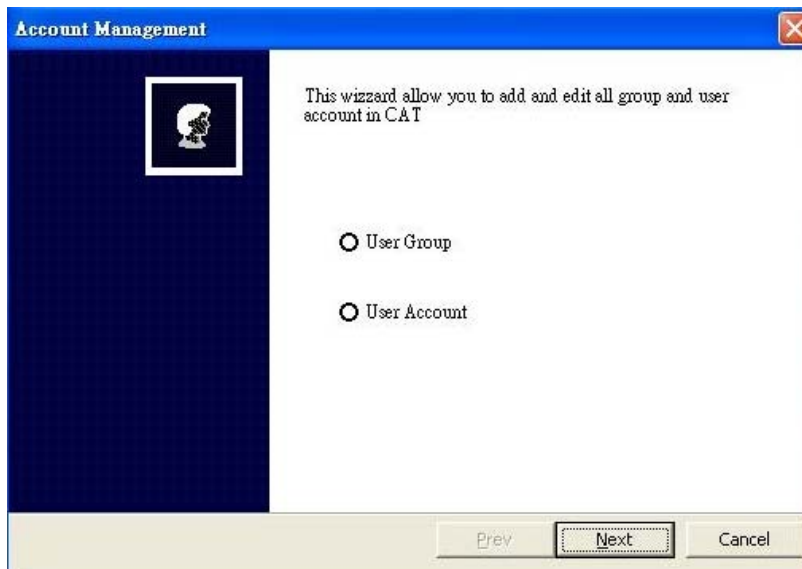
[Note]: Defaults are white color text on grey color background if no OSD\_Setting line.

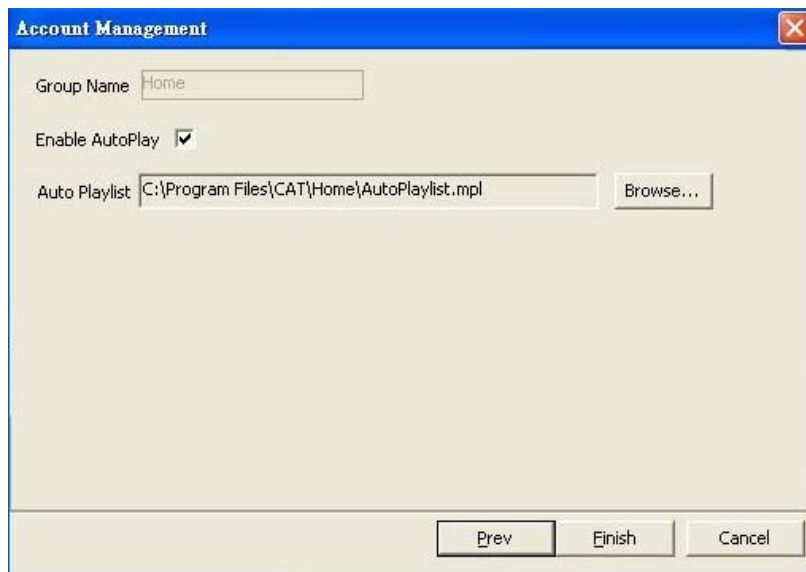
## 5. MP-1000 ADMINISTRATION TOOL Software

1. **MP-1000 ADMINISTRATION TOOL** can be executed on any Windows XP system. Just click on MP-1000 ADMINISTRATION TOOL.exe, it will display like photo below. **Home** is the default group.



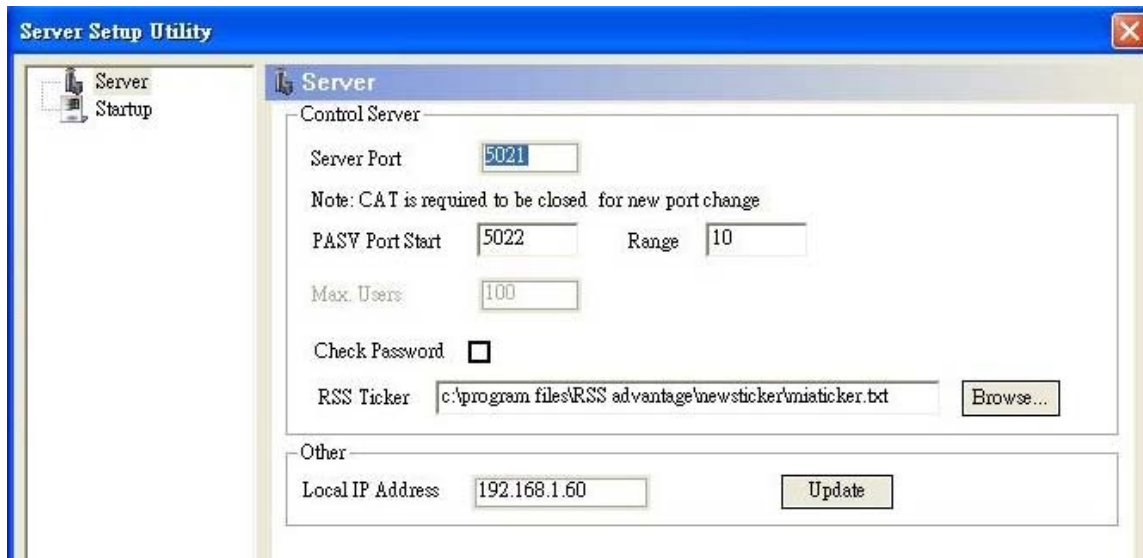
2. **Account** is to create or manage group name and user account name. You can create multiple groups and assign different account names. When any client logs into MP-1000 ADMINISTRATION TOOL, it will go under its corresponding group if account name is matched. If not matched, it will go under default Home group.





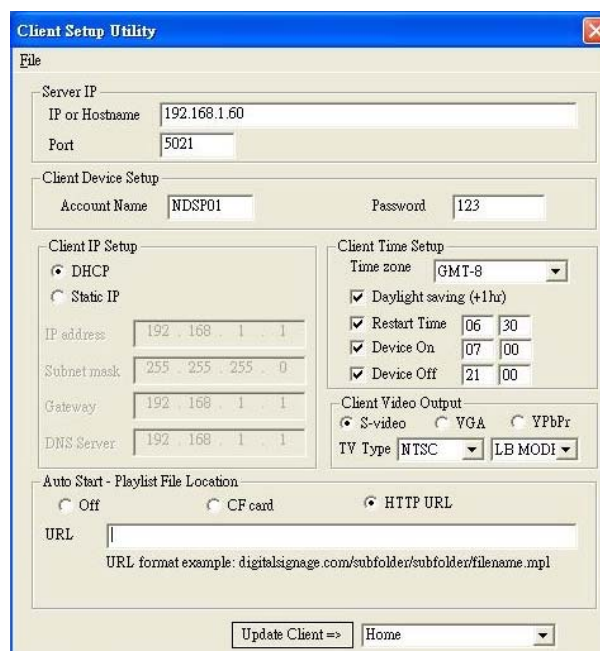
**AutoPlay** When players power up and log in to MP-1000 ADMINISTRATION TOOL, MP-1000 ADMINISTRATION TOOL will automatically send playlist file and its content media files as specified here. Instead of EZ-Play (manual mode), this AutoPlay mode can be more useful for users. For AutoPlay mode, make sure AutoStart=OFF in the player Setup. It conflicts with AutoSart=http URL.

4. **Sever Setup** is for administrator to make changes for server. Server port 5021 is for port forwarding function of network router to access MP-1000 ADMINISTRATION TOOL program. Current version will be limited to 100 client devices to log in. You need to contact your supplier for more users copy.



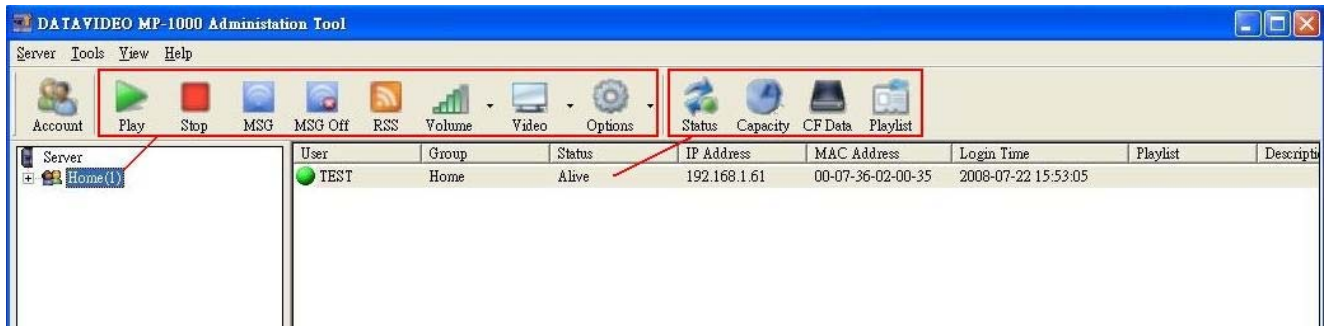
Note: MP-1000 ADMINISTRATION TOOL is required to be closed for new port change! Then open to be effective.

5. **Client Setup** is an editor to create or open autoconfig.mia file. This file is used to update client's setup values. Save autoconfig.mia into CF card, then plug into network player and power up. It will show "Auto Updating" message and then reboot again.



- a) **IP or Hostname:** Type in static IP for local LAN server or hostname for remote set Example: 192.168.1.100 or www.test.com
- b) **Port:** default is 5021. If 5021 is used on the server side, then change to different number. But make sure also change same port # in MP-1000 ADMINISTRATION TOOL and router's port forwarding setting.
- c) **Client Account Name and Password:** Type in user name and password for this client device. After client powers up and logs into MP-1000 ADMINISTRATION TOOL server, it will go to its matched group.
- d) **DHCP or Static IP:** Select Dynamic IP by router or fixed static IP for client device
- e) **Time Zone:** Select your local time zone
- f) **Daylight Saving:** Check will add one hour
- g) **Reboot time:** Check will reboot client when time is hit
- h) **Device On:** will turn on video and start to play from existing playlist file in the CF card when time is hit
- i) **Device Off:** will turn off video and stop playing when time is hit
- j) **Video output:** select S-Video(including Composite video), VGA, YPbPr output. You can use "Video mode" key on remote control to switch
- k) **Off/ CF/HTTP URL Address:**  
 Off: After power up, client will do nothing and wait for server's command  
 CF: After power up, client will playback according to playlist file stored in the CF card or playback A-Z order files if no playlist file is found.  
 HTTP URL: Use CAT's client setup utility to enter network URL path. After power up, client will go to this URL path to download playlist file and execute action item listed in the playlist file.
- l) **Update Client** is a remote command. It will send current settings to all client devices of the selected group. Client device will reboot after save settings into EEPROM. It will take approximately 40-50 seconds to reboot till re-login.

## 6. Graphics ICON:



From 'Start' to 'Options' Icon is the group command. Highlight cursor on the group is the active group. Command will be sent to all the client devices under active group. From 'Status' to 'Playlist' Icon is the client command. Highlight cursor on the user name is the active client. Command will sent to this client only.

- a) **Account:** create group and account user name for group management  
**Below is command that goes to all clients of same group, one by one.**
- b) **Play:** Send 'Playback' command manually to group of clients
- c) **Stop:** Send 'Stop' command manually to group of clients
- d) **Message:** Instant message editor will pop up. You can select any .txt file or manually type in text message, then send to group of clients. A news ticker type of OSD will scroll text from right to left on the bottom of client screen
- e) **Message Off:** Send "Message Off" command to group of clients
- f) **RSS:** Send RSS news ticker message to group of clients. Bundled 'RSS Advantage' software must be pre-installed. And Microsoft .net Framework 1.1 or 2.0 is also required for RSS to run.
- g) **Volume:** It has Mute and 15 levels of volume. Will send volume command manually
- h) **Video:** It has video ON or OFF to turn On/Off client's screen
- i) **Options:** Less frequent use commands are located here. It has 'Send playlist', 'Download', 'Playback', 'Format', 'Reboot', 'Shutdown", and "Group Status"
  - **Send Playlist:** Similar to Playlist button, only send playlist file to group clients
  - **Download:** Only send Download command to group clients
  - **Playback:** same as 'Playback' Icon, only send Playback command to group clients
  - **Format:** Send format CF card command to client. All files in CF card will be erased.
  - **Reboot:** Send reboot client command to client.
  - **Shutdown:** Send shutdown command to client. All clients will power OFF.

MP-1000 ADMINISTRATION TOOL can't power it back on. The only way to turn on is from remote control or power cycle.

- **Group Status:** inquire all clients in the same group to send status back, similar to j as below)

**Below is individual client command, not group command**

- j) **Status:** inquire client to send back current status data including time, current playback filename, music and instant message. Example: Playing [01:54:30] BATMANBEGINS\_1.DIVX(5/11,16) 0:0:6, Scrolling Text: IntoTheBlue.txt
- k) **Capacity:** inquire client to report CF card capacity and firmware version #. Example: Storage Total Size: 1952MB, Free Space: 762MB. F/W version: V2.2.87.0618U
- l) **CF Data:** Inquire client to report all the filenames on the CF card. It will display filenames on the CF tab screen of MP-1000 ADMINISTRATION TOOL.
- m) **CF Data [Delete]:** Click right mouse button on CF window, a 'Delete' will pop up. You can check all the files to be deleted first then click 'Delete'. MP-1000 ADMINISTRATION TOOL will send delete command to client to remove those checked files and update CF Data screen.
- n) **Playlist:** Inquire client to report current playlist file. It will display the playlist file order on the playlist tab screen of MP-1000 ADMINISTRATION TOOL

## 7. RSS Advantage Software



Firstly, install RSS software ([RssAdvantage-1.0.2.3-miaticker.zip](#)) bundled by manufacturer (not from [www.rssadvantage](http://www.rssadvantage) website). This is a RSS Feeds 2.0 application that allows administrator to manage their favorite RSS links. All the news tickers scrolling on PC screen will be mirrored to client device as long as RSS Icon button is pressed.

This is a basic version without some useful features. For example, there is no “Enable/Disable” on each individual RSS link. If you prefer to get full features, please click ‘Help->About’ to purchase upgrade version from here to get 10% discount.

[Note1]: RSS must be installed under C:\Program Files\RSS Advantage\Newsticker for MP-1000 ADMINISTRATION TOOL to fetch news ticker file.

[Note2]: Microsoft .net Framework 2.0 is required to install before RSS Advantage is operational. Search “Microsoft download framework” from any search engine or <http://www.microsoft.com/downloads/details.aspx?FamilyID=0856EACB-4362-4B0D-8EDD-AAB15C5E04F5&displaylang=en>

## 8. Playlist Commander



- a. **Local Directory:** Load media files from local PC's directory. Once files are moved to right window, press 'EZ-Play' on selected group, server will transfer files to clients.
- b. **Remote HTTP Server:** Type URL address and filename from remote HTTP server
- c. **Remote FTP Server:** allow to log in any FTP and browse files to generate playlist
- d. **File Type:** mpl file filter check box is for playlist extension (.mpl) only. This feature is to support multiple playlist with time range settings.
- e. **Open:** Open existing playlist file
- f. **Save:** Save new playlist file or overwrite existing one
- g. **>:** move single file to playlist window
- h. **>>:** move all files to playlist window
- i. **Select Group:** user must specify which group to execute “EZ-Play” and “Playlist” buttons
- j. **EZ-Play:** all the media files on the right playlist window will be downloaded to client and playback immediately. This is manual mode, controlled by user.

- k. **AutoPlay:** Create Autoplaylist.mpl file under that group and enable Autoplay mode. This will not be effective until player reboot or power up next time. User can pre-assign playlist file for particular group's players.

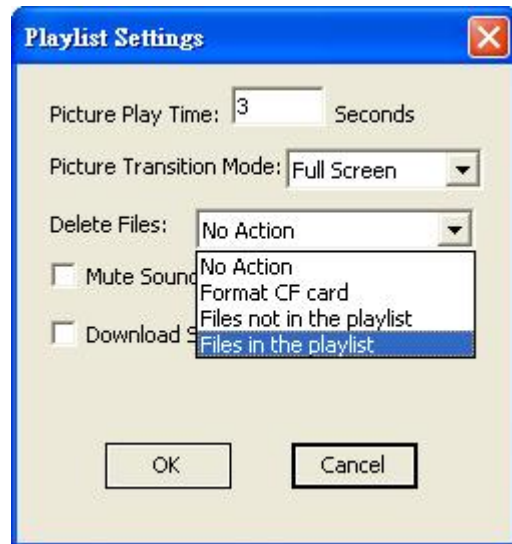
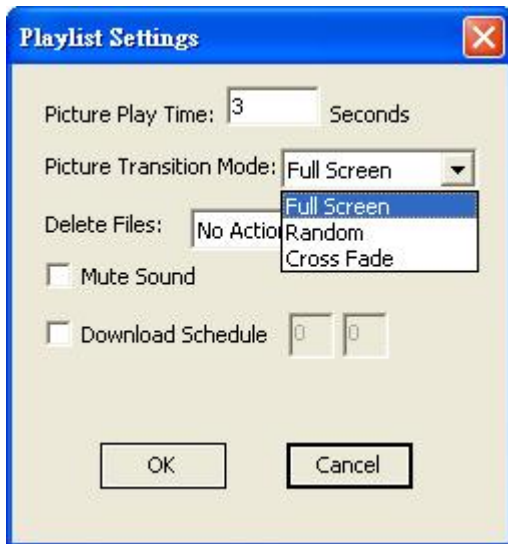


- l. **Duration/Times:** allow to enter loop counter for video file or duration time (seconds) for JPEG file
- m. **Start Time/End Time:** (format: HHMM)
1. If time range is "blank" that means "always playback, no time limit for 24 hours".
  2. Allow each media file to playback in its time range. For example, abc.jpg 30 0800 to 1200 means abc.jpg will be active for 4 hours, each time its duration is 30 seconds. Start to playback from 0800 onward, and stop to playback after 12pm.

**Examples:**

Filename	Duration /Counter	From hh:mm	To hh:mm	Comments
<b>A000.jpg</b>	Blank	Blank	Blank	A000 will display 3 seconds for 24 hours
<b>A001.jpg</b>	30	Blank	Blank	A001 will display for 30 seconds for 24 hours
<b>A002.jpg</b>	Blank	0800	1200	A002 will display 3 seconds from 8am to 12pm
<b>A003.mpg</b>	Blank	Blank	Blank	A003 video will play 1 time each loop for 24 hours
<b>A004.mpg</b>	3	0800	1200	A004 video will play 3 times each loop from 8am-12pm
<b>P001.mpl</b>	Blank	0800	1200	P001 playlist file will start from 8am to 12pm
<b>P002.mpl</b>	Blank	1200	1800	P002 playlist file will start from 12pm to 6pm

- n. **Del:** Remove single file from playlist window
- o. **Clear:** Remove all files from playlist window and reset values in the Setting menu
- p. **Up/Down arrows:** Move up or down on the highlight filename to proper position
- q. **Settings:** Some useful settings for playlist file



- r. **Picture Play Time:** control interval time between JPEG files
- s. **Picture Transition Mode:** 3 modes (Full screen, Random, and Cross Fade) are available to change picture transition effect
- t. **Mute Sound:** Mute sound in the playlist, all the content playback will be silent.

## Delete Files:

- a. **No Action:** default value, do nothing.
- b. **Format CF card:** Will delete all files in the CF card then download new files based on playlist mpl.
- c. **Files not in the playlist:** If CF card has many files, the files not in the playlist will be deleted. If on the playlist, will be kept to avoid download again.
- d. **Files in the playlist:** This is like multiple file deletion command. It will only delete files in the playlist.
- e. **Download schedule:** will write download time into playlist file. When time is hit, client will start to download content according to playlist file.

Note : It depends on the PC [MP-1000 Tool]'s time, not player's time.

## 9. Playlist Scheduler

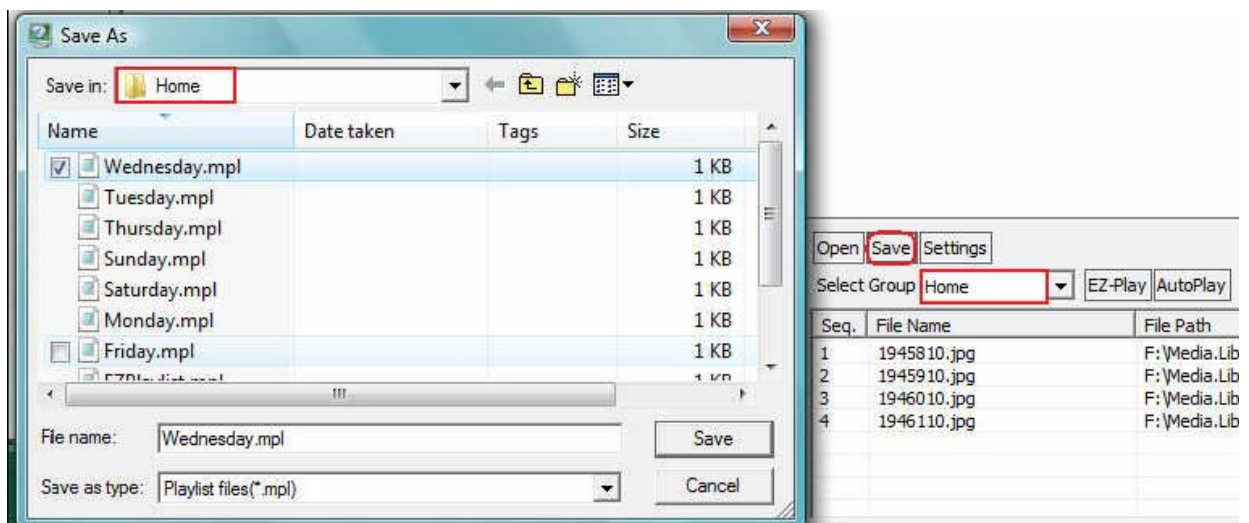
### I. Instruction

This new feature allows user to manage advanced and flexible playlist schedule, not just time of day only. User can program multiple playlist files with different date range and weekday choices. Player will check internal time clock and <filename>.sch file to download today's playlist file from HTTP server or local MP-1000 Tools.

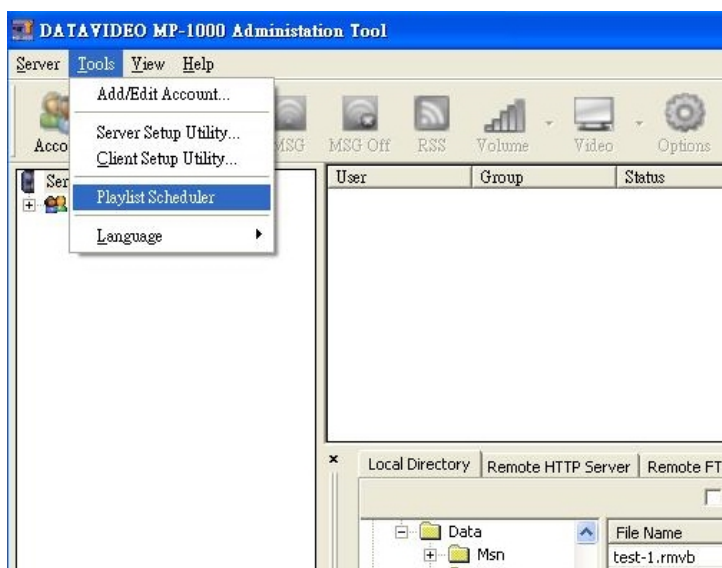
### II. Operation

1. Use MP-1000 Tools playlist editor to create your daily playlist file and save. For local autoplay mode to use this feature, you must save playlist file into same group's folder.

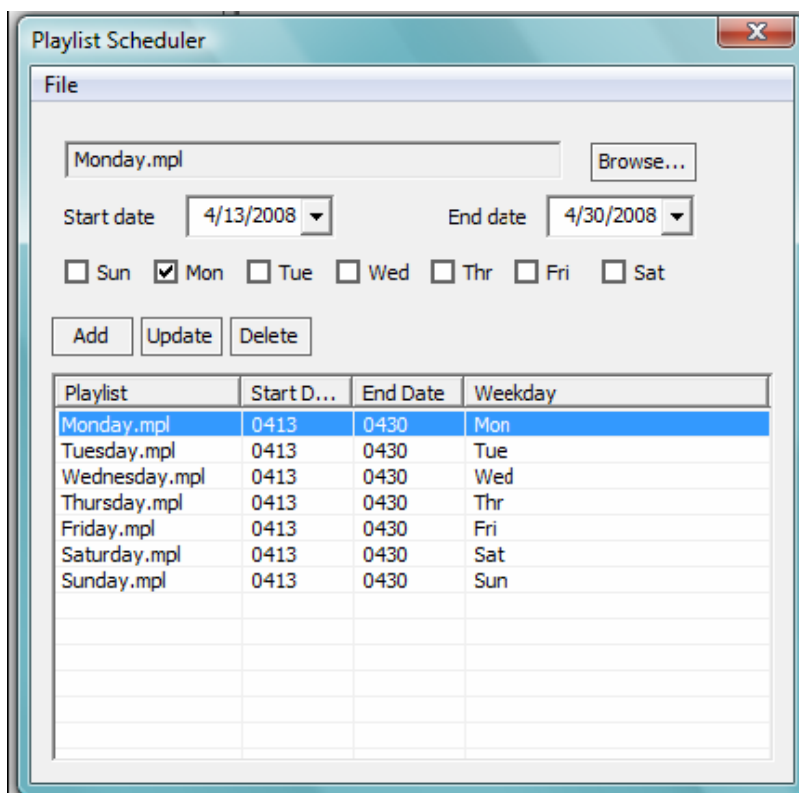
For example, if for Home group, then save under <Home>.



2. Go to Tools and select playlist Scheduler



3. Browse your playlist files and select your date range and weekday and click “Add” or “Update” or ”Delete” for any change on the cursor highlighted file. And then save as a .sch file into same folder.



4. There are two places that can do this advanced schedule.  
One is MP-1000 tools autoplaymode (AutoStart=Off in Setup)  
One is HTTP URL path (Auto Start= Http URL).

4.1 For first case, you need to go to Account and browse this .sch file and enable Autoplay mode.



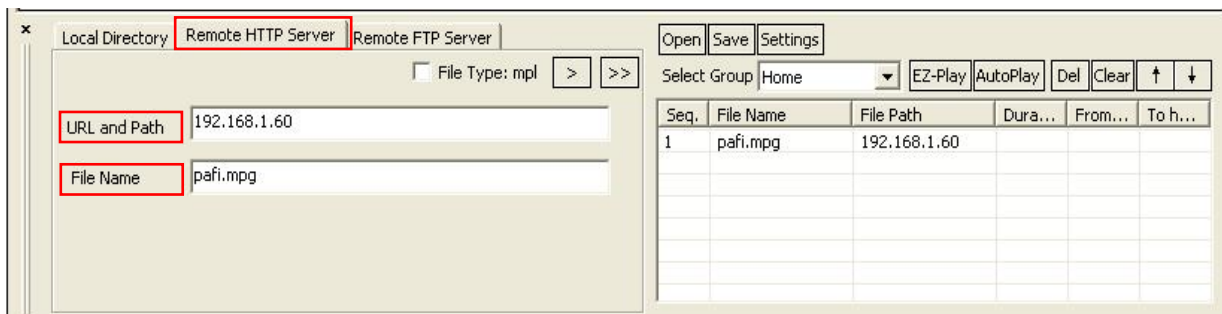
After demo.sch is enabled, MP-1000 TOOLS will read this .sch file and determine today's playlist file and return to player when player login to MP-1000 TOOLS. So Player can download today's content and playback.

4.2 For case 2 (Http URL), you need to use a FTP client tool to upload all your .sch and .mpl files to this Http URL folder. (ex. http://192.168.1.60/1000 folder) Then use client setup utility to set the Http URL path into player's eeprom. When player powers up, it will download demo.sch file first and determine today's playlist file and download again.

Note: For player to get today's playlist file, you can set a daily reboot time in Setup under Setup-> Device-> Restart. Ex. 08:00. Player will reboot every morning at 8am to start a new playlist file.

## 10. Remote HTTP Server

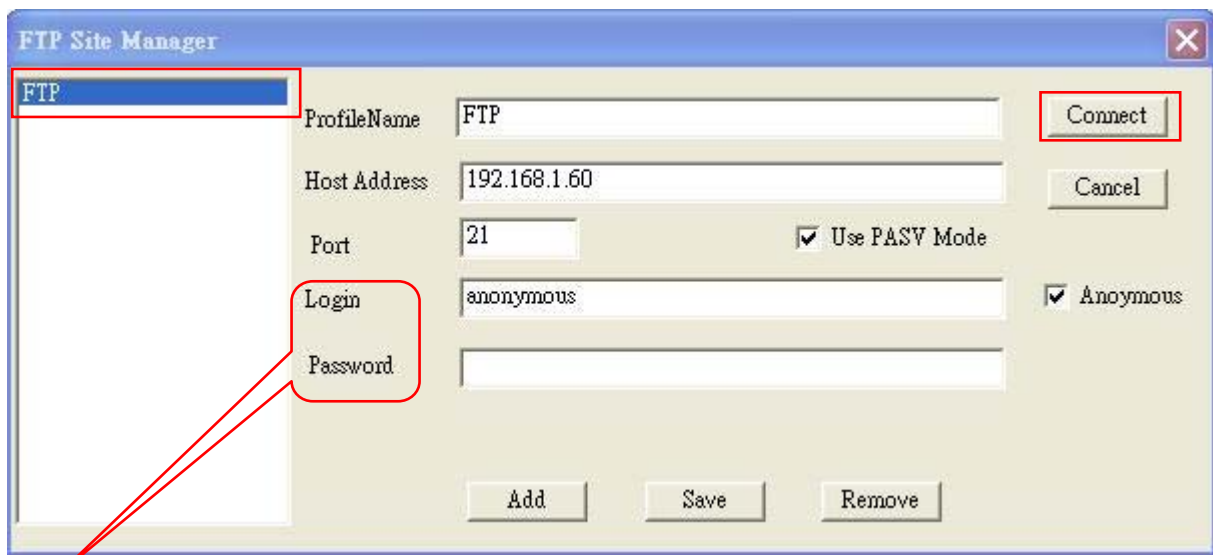
Playlist commander also supports HTTP server. Just type URL path and filenames in HTTP server storage. Click EZ-Play or save playlist file for future use.



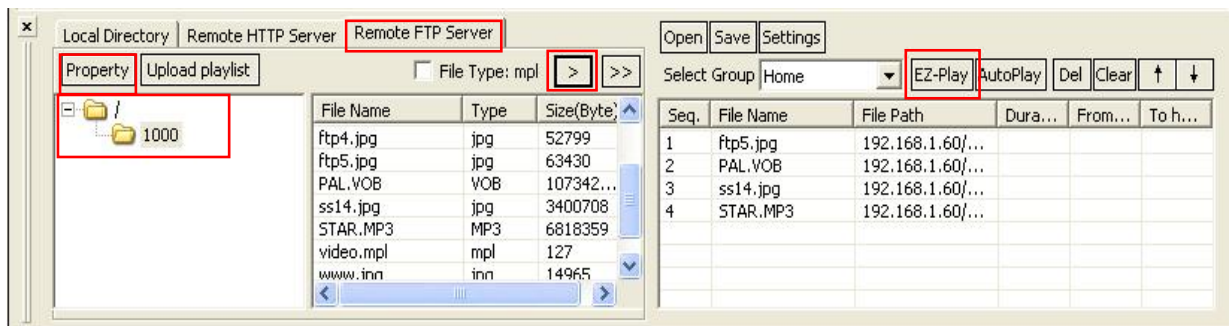
## 11. Remote FTP Server

The feature allows user to access FTP server and create a FTP playlist. All the navigation is the same as local directory. But need to enter your regular FTP information including user name, password ..etc. You can click EZ-Play to execute immediately or save playlist for future use.

When click, it will save the playlist file into FTP server where the file folder is instead of local hard drive directory. For example, 'EZplaylist.mpl' has been saved and uploaded under (1000) folder. It can combine with auto start=FTP url to update your playlist file and reflect to player within 3 minutes. No need to use another FTP client software to upload playlist separately.



Please enter Login name and Password, if FTP has need.



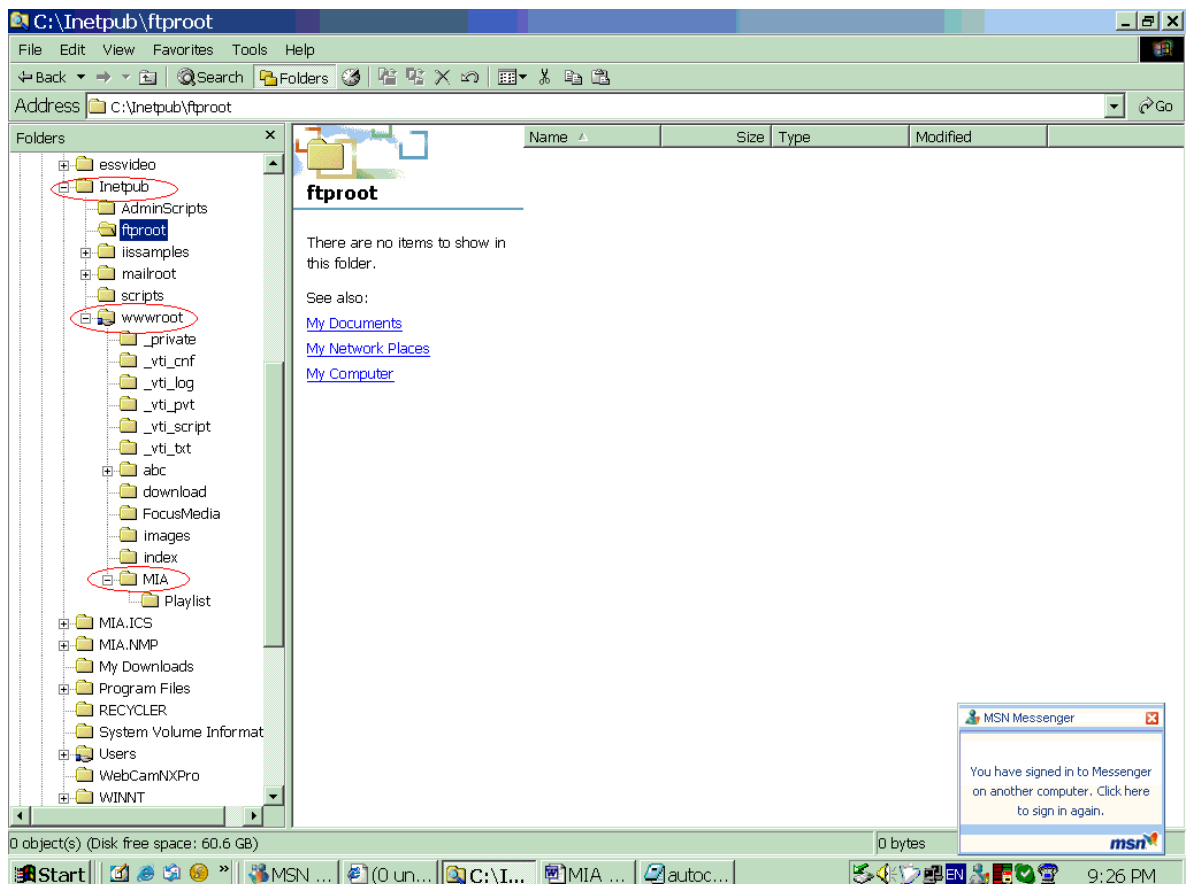
## 6. HTTP Server Setup

### Microsoft IIS

You need to setup your PC as HTTP server, so it can become a content server to send media files to client devices. Your Windows XP must be **Professional** version. Home edition has no IIS (Internet Information Services) to be used. (Note: But you can download freeware http server software from <http://httpd.apache.org/>)

### Microsoft XP Pro IIS (Internet Information System) installation procedure:

1. Go to Control panel and select Add/Remove programs
2. Select Add/Remove Windows Components on the left column
3. Check "IIS (Internet Information Services)" and install, you may be asked to put Microsoft Installation CD.
4. After the installation is done, a subfolder will be created under C:\inetpub\wwwroot
5. You can create your subfolder to put your media files, also let wwwroot becomes a shared folder. So all the subfolders under wwwroot can be accessed from client's request.

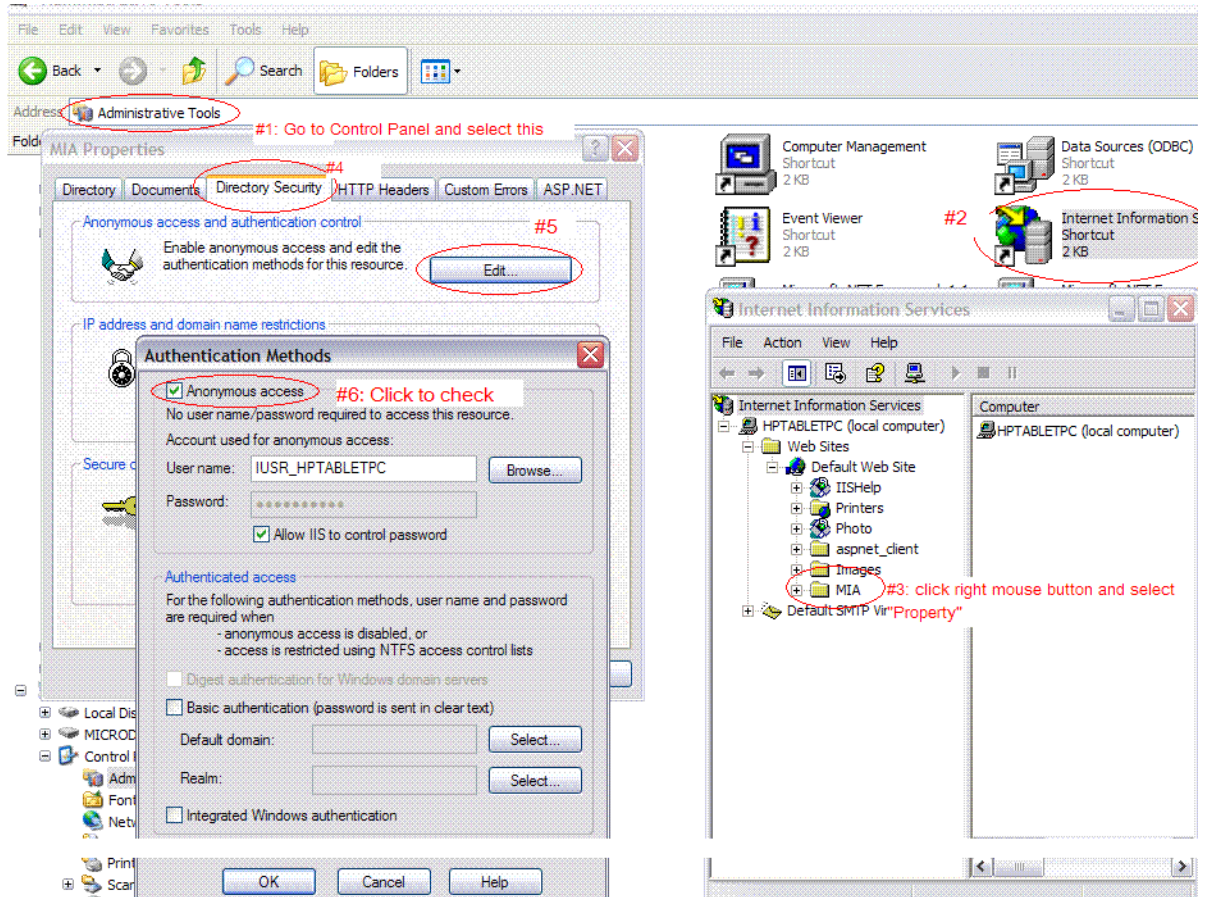


## 6. Important note:

If you encounter an http download error on MP-1000 ADMINISTRATION TOOL, it's possible that the anonymous access is not checked on the IIS property. Please follow below photo to check.

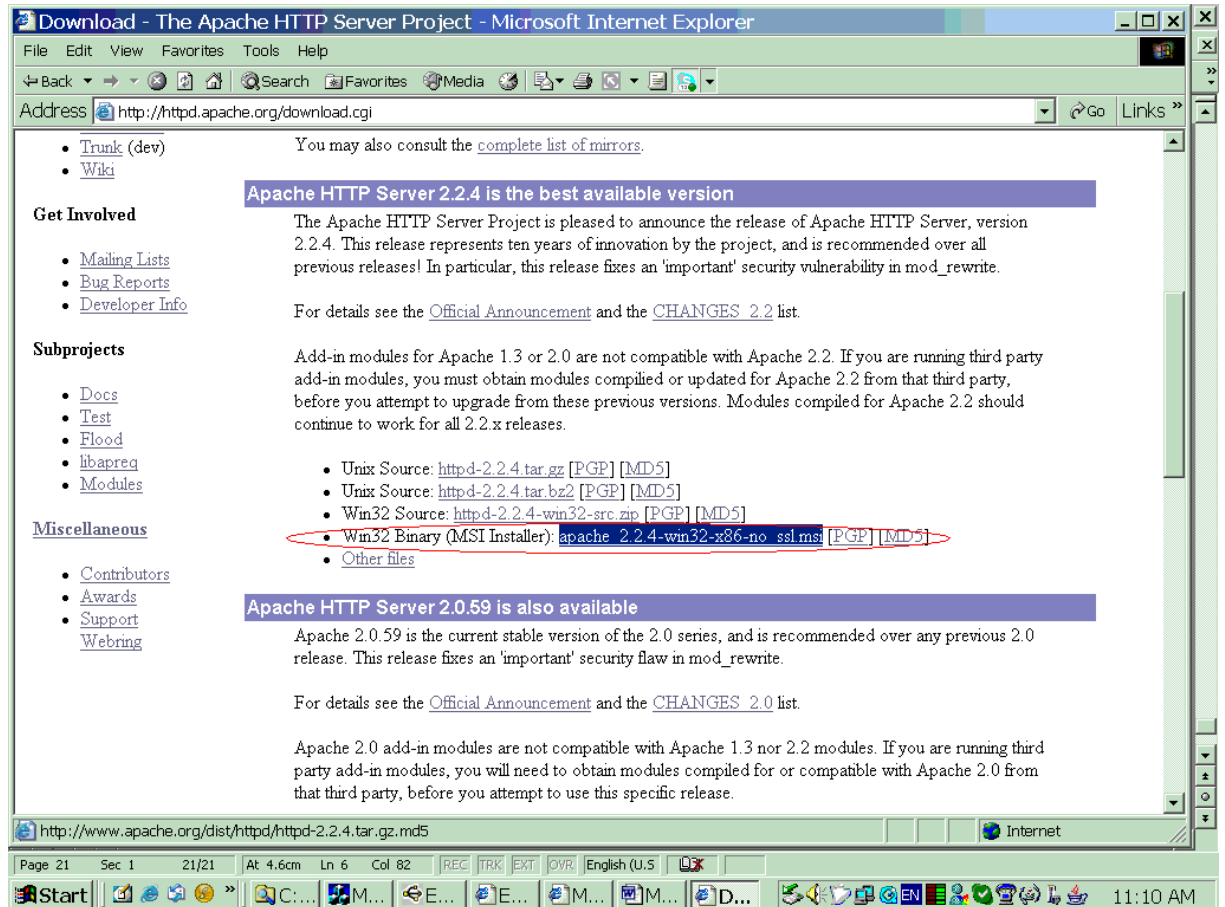
Procedure: Go to Control Panel->#1.Administrative Tools->#2.IIS Shortcut->#3. shared subfolder -> #4 property/Directory Security -> #5. Edit -> #6.

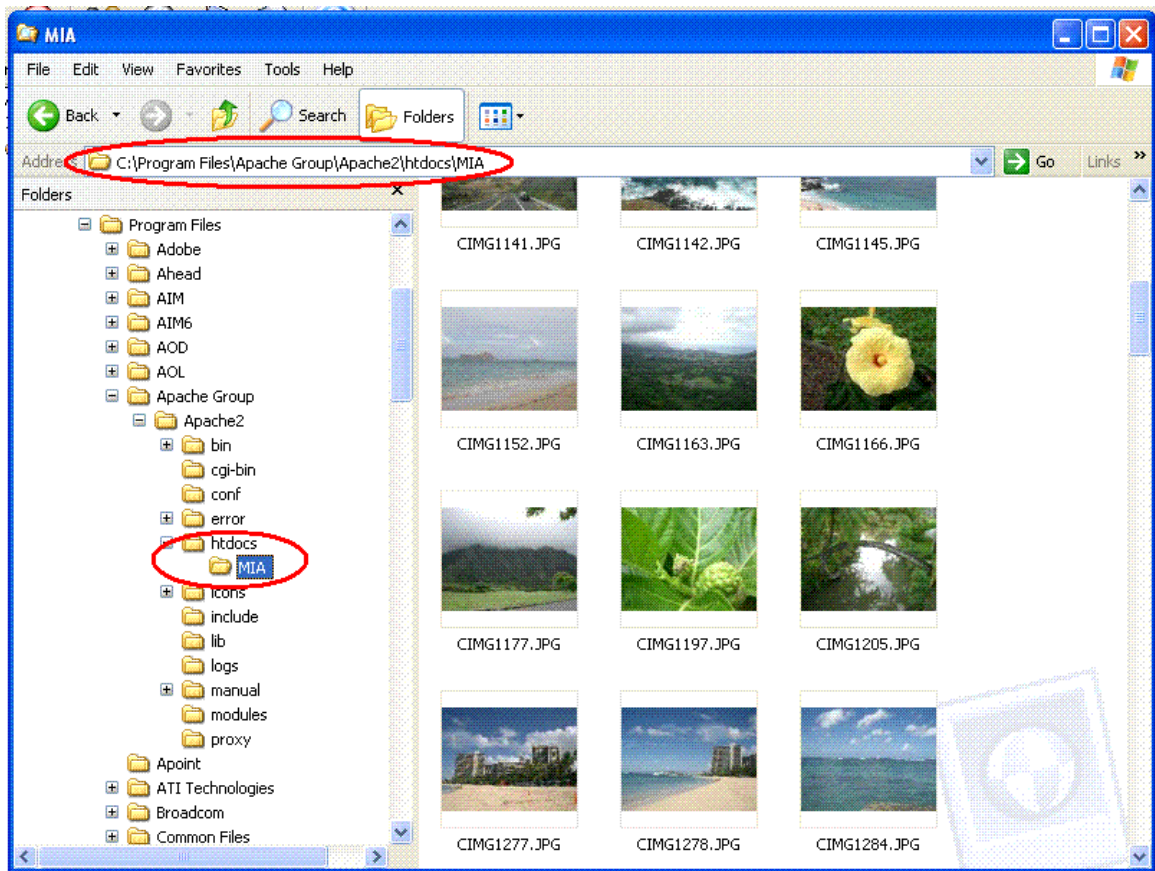
### Anonymous Access



## Apache HTTP Server Installation Procedure:

1. Go to <http://httpd.apache.org/download.cgi> to download [apache\\_2.2.4-win32-x86-no\\_ssl.msi](#)
2. Follow instructions to install
3. Copy content files to C:\Program Files\Apache Group\Apache\htdocs\ for download

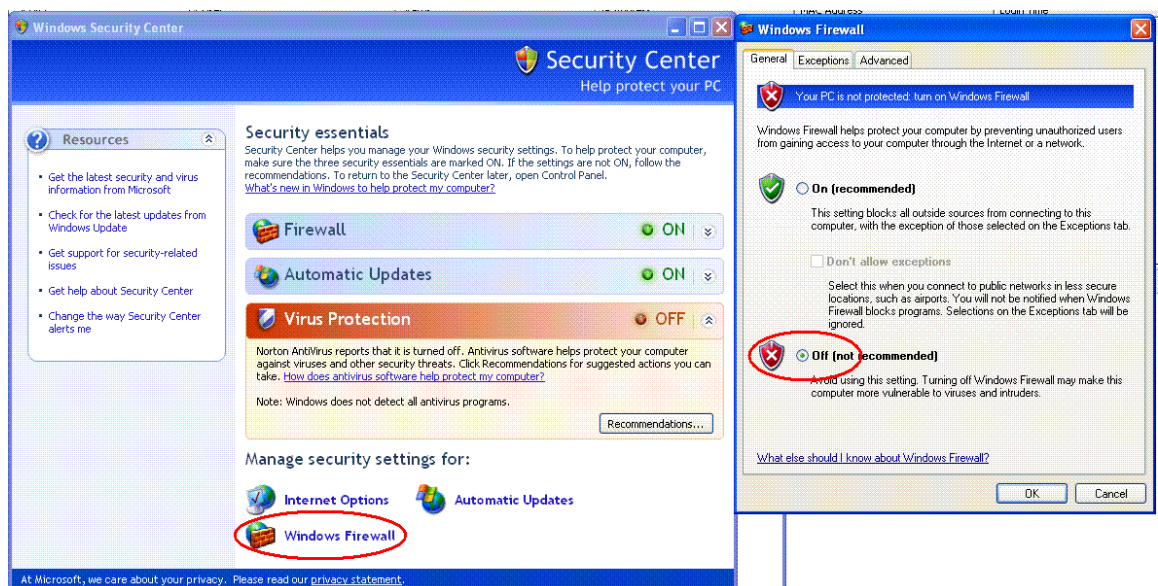




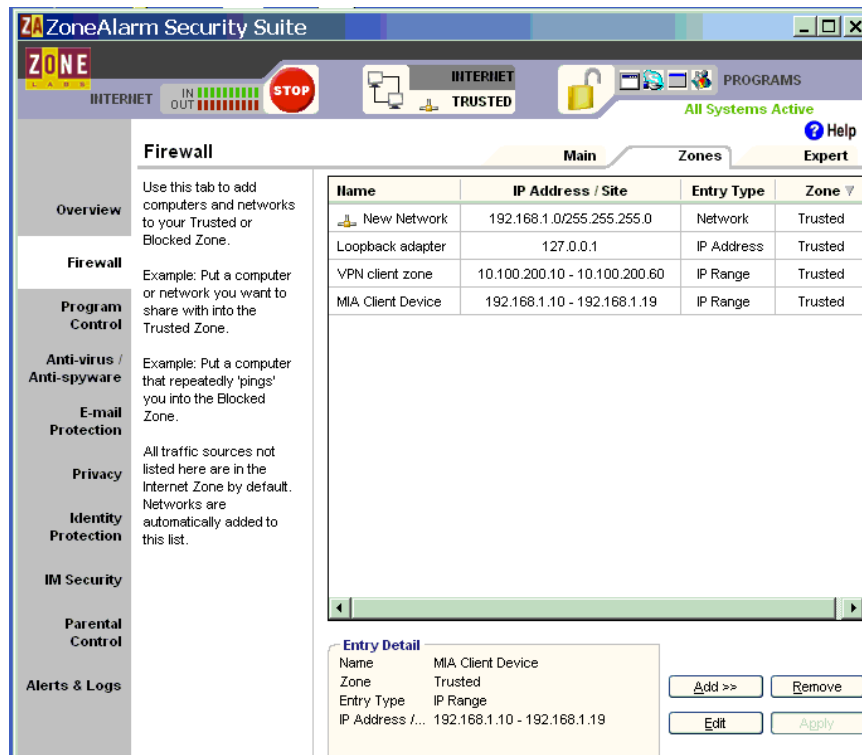
## 7. Firewall and Anti-Virus program Configuration

Also your anti-virus program or firewall may block MIAICS program.

**A. Firewall:** Set XP's Firewall to OFF, otherwise client is not able to log in to MIAICS.

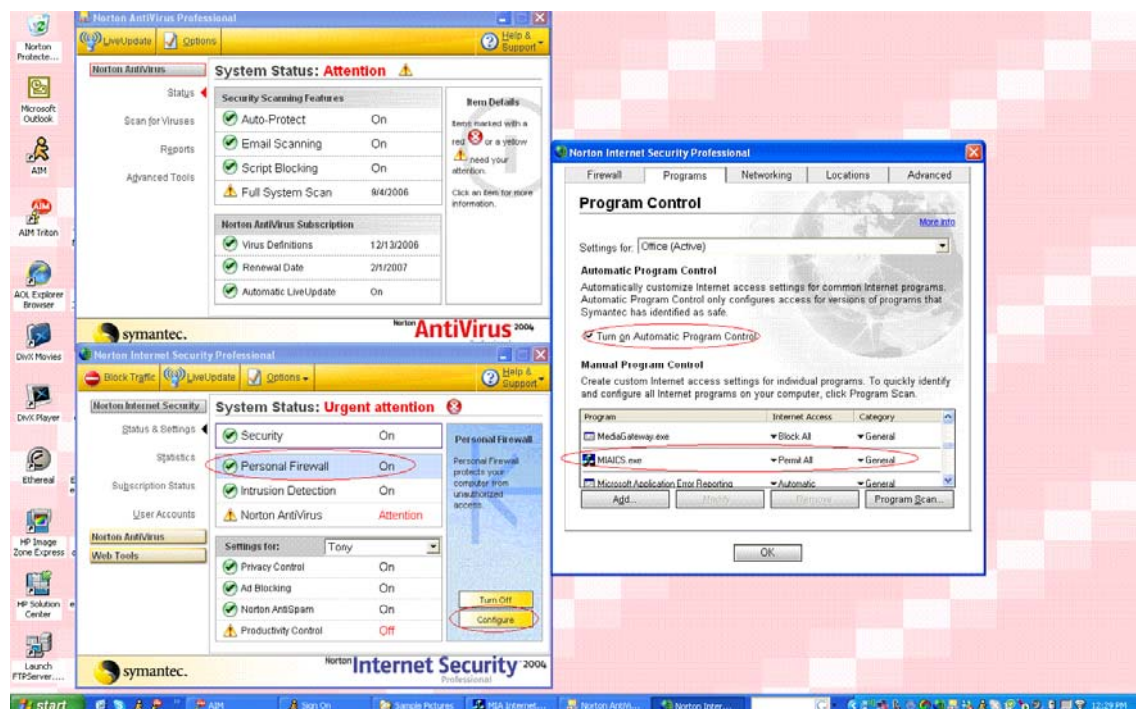


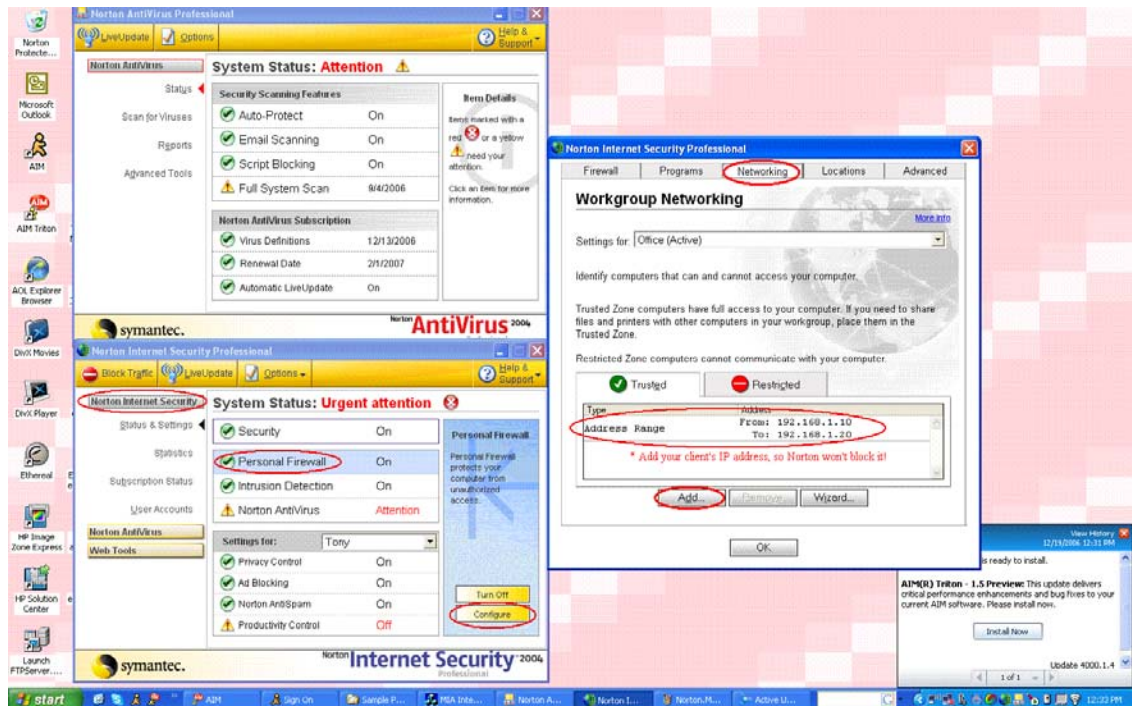
**B. Zone Alarm:** If you use Zone Alarm, add MIAICS as trusted program and IP range for clients.



**C. Norton Anti-Virus:**

If you are using Norton Anti-Virus program, make sure to add MIAICS as trusted program and also set IP ranges for client devices to go thru. Easiest way is to set Personal Firewall to OFF.





## 8. Router Setup

Router Setup [Important]

1. Make sure to set DMZ to ON and its IP address to the IP of the PC that run MP-1000 ADMINISTRATION TOOL.

For example if PC that run MP-1000 ADMINISTRATION TOOL is 192.168.1.10, then turn on DMZ and set IP to 192.168.1.10.

So data and command between Client device and MP-1000 ADMINISTRATION TOOL server can communicate each other.

2. Make sure to enable "Port Forwarding" settings to Start: 80, End: 5021, IP: 192.168.1.10

Otherwise only commands between client and this server PC can go thru, but not data file like playlist.mpl

3. MIAICS uses port 80 and port 5021, so these two ports must be open to let MIAICS command and files go thru between client device and MIAICS program.

- ◆ Setup MP-1000 Client to 5021 port
- ◆ Setup FTP to 20 and 21 port
- ◆ Setup HTTP to 80 port

NETGEAR SMARTWIZARD router manager  
54 Mbps Wireless Router model WGR614 v5

**Port Forwarding / Port Triggering**

Please select the service type

Port Forwarding  
 Port Triggering

Service Name: AIM Server IP Address: 192.168.1.101

#	Service Name	Start Port	End Port	Server IP Address
1	MIAClient	5021	5021	192.168.1.101
2	FTP	20	21	192.168.1.101
3	HTTP	80	80	192.168.1.101

Buttons: Edit Service, Delete Service, Add Custom Service

**Port Forwarding / Port Triggering Help**

Port Triggering is an advanced feature that can be used for gaming and other internet applications. Port Forwarding can typically be used to enable similar functionality, but it is static and has some limitations.

Port Triggering opens an incoming port temporarily and can does not require the server on the internet to track your IP address if it is changed by DHCP, for example.

Port Triggering monitors outbound traffic. When the router detects traffic on the specified outbound port, it remembers the IP address of the computer that sent the data and "triggers" the incoming port. Incoming traffic on the triggered port is then forwarded to the triggering computer.

Using the *Port Forwarding / Port Triggering* page, you can make local computers or servers available to the Internet for different services (for example, FTP or HTTP), to play Internet games (like Quake III), or to use Internet applications (like CUseeMe).

Port Forwarding is designed for FTP, Web Server or other server based services. Once port forwarding is set up, request from Internet will be forwarded to the proper server. On the contrary, port triggering will only allow request from Internet after a designated port is "triggered". Port triggering applies to chat and Internet

- Turn on DMZ server and input your PC server's IP address

NETGEAR SMARTWIZARD router manager  
54 Mbps Wireless Router model WGR614 v5

**WAN Setup**

Connect Automatically, as Required

Disable SPI Firewall

Default DMZ Server: 192.168.1.101

Respond to Ping on Internet Port

MTU Size (in bytes): 1500

Buttons: Apply, Cancel

**WAN Setup Help**

Using this page, you can set up a Default DMZ Server and allow the router to respond to a 'ping' from the internet. Both of these options have security issues, so use them carefully.

**Connect Automatically, as Required**

Normally, this option should be Enabled. An Internet connection will be made automatically after each timeout, whenever Internet-bound traffic is detected. This provides connection on demand and is potentially cost-saving. If disabled, you must connect manually, using the "Connection Status" button on the **Router Status** screen. This manual connection will stay up all the time without timeouts.

**Disable SPI Firewall** - The SPI (Stateful Inspection) Firewall protects your LAN against Denial of Service attacks. This should only be disabled in special circumstances.

**Default DMZ Server**

Specifying a Default DMZ Server allows you to set up a computer or server that is available to anyone on the Internet for services that you haven't defined. There are

- Turn on DHCP and set a range (optional)

The screenshot shows the NETGEAR Router Manager interface for a 54 Mbps Wireless Router (model WGR614 v5). The main content area is titled "LAN IP Setup" and is divided into several sections:

- LAN TCP/IP Setup:**
  - IP Address: 192 . 168 . 1 . 1
  - IP Subnet Mask: 255 . 255 . 255 . 0
  - RIP Direction: None
  - RIP Version: Disabled
- Use Router as DHCP Server:**
  - Use Router as DHCP Server
  - Starting IP Address: 192 . 168 . 1 . 10
  - Ending IP Address: 192 . 168 . 1 . 101
- Address Reservation:**

#	IP Address	Device Name	Mac Address
1	192.168.1.11	Art	00:14:A5:0F:6D:0B
2	192.168.1.12	Melody_DellI9300	00:13:CE:21:EC:82
3	192.168.1.13	IRIS_DELL2200	00:14:A5:3D:E8:BE
4	192.168.1.14	HPTABLETPC	00:08:02:D2:71:52
5	192.168.1.10	RAINBOW	00:09:5B:49:EB:F9

On the right side, there is a "LAN IP Setup Help" panel with the following text:

The DHCP and TCP/IP default values work for most users.

**LAN TCP/IP Setup**

These are advanced settings that you may configure if you are a network administrator and your network contains multiple routers. If you make any changes to these settings you will need to restart your computer(s) for the settings to take effect.

- IP Address:** Type the IP address of your router in dotted decimal notation (factory default: 192.168.0.1).
- IP Subnet Mask:** The subnet mask specifies the network number portion of an IP address. Your router will automatically calculate the subnet mask based on the IP address that you assign. Unless you are implementing subnetting, use 255.255.255.0 as the subnet mask (computed by the router).
- RIP Direction:** RIP (Routing Information Protocol, RFC1058 and RFC1389) allows a router to exchange routing information with other routers.

If your PC server's IP is assigned by ADSL or cable modem with dynamic IP, not static IP. Then you need to setup a DNS host name, please register your DNS host name at [www.dyndns.org](http://www.dyndns.org). And program your user name and password in your router. When router powers up, it will log in to dyndns.org with your host name. And you set your client's server as host name instead of IP in the Setup screen, for example: [www.miotech.blogdns.com](http://www.miotech.blogdns.com). Client will log in to dyndns.org site to get your router's IP address of your PC server. So Client will connect to your PC server.

NETGEAR Router - Microsoft Internet Explorer

File Edit View Favorites Tools Help

Address http://192.168.1.1/start.htm

**NETGEAR**  
SMARTWIZARD router manager  
54 Mbps Wireless Router model WGR614 v5

54 Mbps  
2.4 GHz  
802.11

- Router Status
- Attached Devices
- Backup Settings
- Set Password
- Router Upgrade
- Advanced
  - Wireless Settings
  - Port Forwarding / Port Triggering
  - WAN Setup
  - LAN IP Setup
  - Dynamic DNS
  - Static Routes
  - Remote Management
  - UPnP
- Web Support
  - Knowledge Base
  - Documentation
- Logout

### Dynamic DNS

Use a Dynamic DNS Service

Service Provider: www.DynDNS.org

Host Name: miatech.blogdns.com

User Name: miatech

Password: \*\*\*\*\*

Use Wildcards

Apply Cancel Show Status

### Dynamic DNS Help

A Dynamic DNS (DDNS) Service provides a central public database where information (such as e-mail addresses, host names and IP addresses) can be stored and retrieved. The Dynamic DNS server also stores password-protected information and accepts queries based on e-mail addresses.

If you want to use a DDNS service, you must register for it. The Dynamic DNS client service provider will give you a password or key.

To set up for DDNS:

1. If you have registered with a DDNS service provider, select the **Use A Dynamic DNS Service** check box.
2. Select the name of your dynamic DNS **Service Provider**.
3. Type the **Host Name** that your dynamic DNS service provider gave you. The DDNS service provider may call this the domain name.
4. Type the **User Name** for your DDNS account.
5. Type the **Password** (or key) for your DDNS account.
6. Click **Apply** to have the DDNS service used.

Use Wildcards - If you have DYNDNS as your DDNS

Start | C:\... | MS... | (0 u... | NE... | Doc... | Rou... | Internet | 10:00 AM

## Service and Support

It is our goal to make your products ownership a satisfying experience. Our supporting staff is available to assist you in setting up and operating your system. Please refer to our web site [www.datavideo-tek.com](http://www.datavideo-tek.com) for answers to common questions, support requests or contact your local Datavideo office below.

### Datavideo Corporation (USA)

12300-U East Washington Blvd., Whittier, CA 90606 USA

Tel: +1 562 696 2324	<a href="mailto:contactus@datavideo.us">contactus@datavideo.us</a>	<a href="http://www.datavideo.us">www.datavideo.us</a>
----------------------	--	--

### Datavideo Technologies Europe BV

Floridadreef 106, 3565 AM Utrecht, The Netherlands

Tel: +31 30 261 9656	<a href="mailto:info@datavideo.nl">info@datavideo.nl</a>	<a href="http://www.datavideo.info">www.datavideo.info</a>
----------------------	--	--

### Datavideo UK Limited

Unit 2 Waterside Business Park, Hadfield, Glossop, Derbyshire SK13 1BE UK

Tel: +44 1457 851000	<a href="mailto:sales@datavideo.co.uk">sales@datavideo.co.uk</a>	<a href="http://www.datavideo.info">www.datavideo.info</a>
----------------------	--	--

### Datavideo Technologies Co., Ltd.

10F, 176 Jian-Yi Rd, Chung Ho City, Taipei Hsien, Taiwan 235

Tel: +886 2 8227 2888	<a href="mailto:service@datavideo.com.tw">service@datavideo.com.tw</a>	<a href="http://www.datavideo.com.tw">www.datavideo.com.tw</a>
-----------------------	--	--

### Datavideo Technologies China Co.

2F-D, 2 Lane 777, West Guangzhong Rd, Zhabei District, Shanghai, China

Tel: +86 21 5603 6599	<a href="mailto:service@datavideo.cn">service@datavideo.cn</a>	<a href="http://www.datavideo.cn">www.datavideo.cn</a>
-----------------------	--	--

### Datavideo Technologies (S) PTE Ltd.

No. 22 Lorong 21A Geylang, #09-02 Prosper Industrial Building, Singapore 388431

Tel: +65 6749 6866	<a href="mailto:info@datavideo.sg">info@datavideo.sg</a>	<a href="http://www.datavideo.sg">www.datavideo.sg</a>
--------------------	--	--

### Datavideo Hong Kong Limited

G/F., 26 Cross Lane, Wanchai, HK

Tel: +852 2833 1981	<a href="mailto:info@datavideohk.com">info@datavideohk.com</a>	<a href="http://www.datavideohk.com">www.datavideohk.com</a>
---------------------	--	--

All the trademarks are the properties of their respective owners.

Datavideo Technologies Co., Ltd. All rights reserved 2018.